

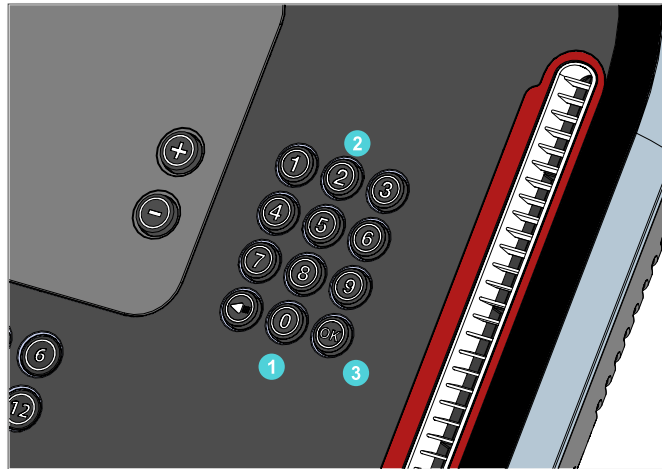
SERVICE BULLETIN

8/10 Series Treadmill Last Error List

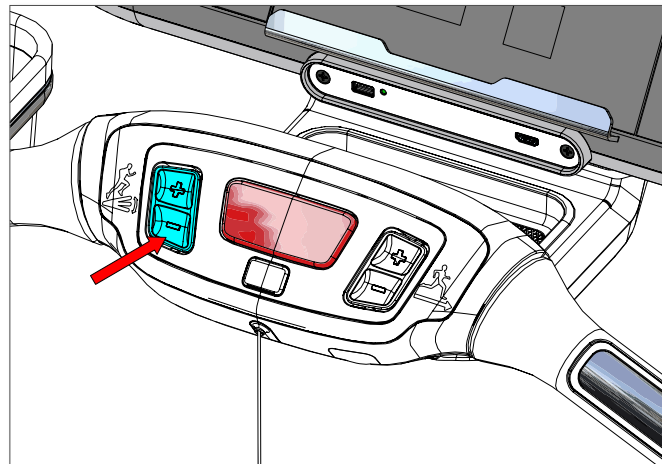
Applies to: 8 + 10-Series OpenHub LCD Console

Enhanced Images: Pictures can be zoomed in to any level for detail. Use the standard zoom tools for your platform to zoom in.

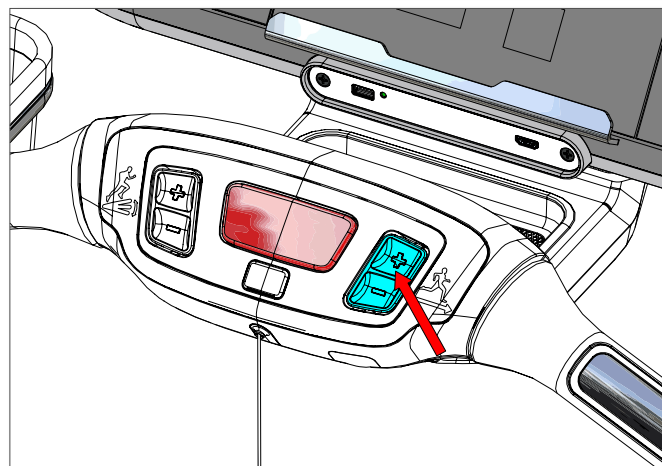
1. Press and hold the **0**, **2** and **OK** keys together. A beep will sound and “MAIN-TENANCE MODE” will display momentarily in the Information Window of the console.



2. Press **decrease level** **-** until the display reads “LAST ERROR LIST” then press **OK**.



3. Within the list, there are five sets of information for the last five error codes that have occurred. Press numbers **1** thru **5** to access each set.



4. Use the **increase speed** **+** to scroll through the information on each set. The set number is to the right of the information name in brackets. Example: “LAST ERROR (1)”.

SERVICE BULLETIN

Last Error List worksheet

Mouse over field in response to see sample data.

Serial Number	Software Version:	Date:		
Operating Hours:	Distance:	Install/WO #		
(1)	(2)	(3)	(4)	(5)
LAST CODE				
LAST ELEV				
LAST EPOT				
LAST SSPD				
LAST PWM				
LAST MSPD				
LAST TIME				
LAST DFR				
LAST PGRM				
LAST ODOM				
LAST OPHR				
LAST ERR CNT				

LAST CODE Index	
Common Codes in Blue	
1	Over Speed
2	Speed Change
3	Elevation Reverse Direction
4	Elevation Range
5	Elevation Stall
6	Speed Stall
15	Stuck Key
17	NOVRAM
18	DFR
19	Rail Stop Switch

Error Stats	
KEY DOWN	
CHK MTR	
CHK SPD	
RAIL STOP	
SP CHANGE	
ELV STALL	
ELV RANGE	
ELV LOST	